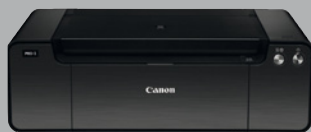




Power to  
impress

Professional Photo Printers



you can



**Canon**

Professional,  
powerful, inspirational...



© Jeff Ascough. Canon Ambassador



With the new powerful software, the sleek design of the new PRO-10 and PRO-100 printers and the flagship PRO-1, the PIXMA PRO series range has an A3+ photo printer to perfectly match your passion for exceptional photography.

The last step in a photograph's journey is as important as the first



### PIXMA PRO-1

The professional's choice

With its ultimate print quality and commercial-scale productivity, the PRO-1 delivers stunning professional, saleable images up to A3+ in less than 3 minutes. Canon's state-of-the-art 12-ink system, with large capacity ink tanks, includes Chroma Optimizer for uniform glossiness and dense, smooth blacks. Professional pigment inks and a wide choice of media support mean that the PRO-1 will ensure flawless images that precisely match your creative vision.



### PIXMA PRO-10

Gallery-quality colour and mono images

The 10-ink pigment-based system with 3 monochrome inks produces exceptional, saleable, gallery-quality colour and mono prints up to A3+. With Chroma Optimizer's clear ink providing amazing colour gamut and deep blacks, the PRO-10 offers flexible media choice, enhanced connectivity and professional print plug-in for outstanding workflow.



### PIXMA PRO-100

Vibrant and exciting

For professional prints at home, the PRO-100 is feature-rich with wide media choice and connectivity that will deliver exhibition-quality prints for years to come. The 8-ink dye-based system with 3 monochrome inks produces stunning quality, vibrant prints in colour and monochrome up to A3+.

The printer your images deserve

The new styling and features of the PIXMA PRO series has been designed to meet the demands of every photographer: from advanced amateurs to top professionals, consistently delivering the results your images deserve.

## PIXMA PRO-1

### The professional's choice

The PIXMA PRO-1 is the ultimate in professional quality desktop photo-printing that will inspire your creativity and give you unrivalled artistic control over your entire workflow. Setting the benchmark for A3+ photo printers, its unique 12-ink system - where all inks are available for use - allows you to produce flawless, archival prints with outstanding image permanence that you can sell or exhibit with confidence.

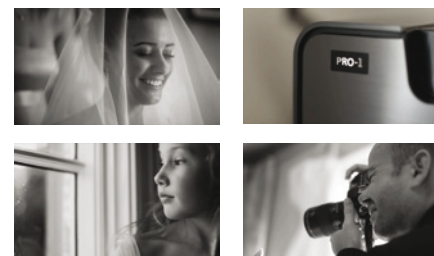


A Chroma Optimizer enhances black density to deliver striking prints with perfect, smooth blacks. It also regulates surface reflection, to ensure uniform glossiness and keep print colours natural, as well as expand the colour gamut. The Optimum Image Generating (OIG) system analyses the photo colour and precisely calculates the optimum ink combination and volume of ink droplets, which are then accurately placed on the paper by Canon's FINE print head with 12,288 nozzles.



A super-fast print speed means PIXMA PRO-1 can print a gallery-quality A3+ photo in less than 3 minutes to increase your productivity as well as your profits. Versatile media support for up to 14" wide paper, including an expanded range of ICC profiles for well-known Fine Art papers, means you can use whichever one is right for your artistic vision. Ambient Light Correction automatically corrects the print colour tones for optimum viewing under various lighting conditions.

With Ethernet connection, the unrivalled capabilities of your PIXMA PRO-1 can be accessed by multiple computers and users. With great hardware durability you can be sure your creativity and your business are in safe hands.



See the PRO-1 video featuring Jeff Ascough on Canon website



## PROFESSIONAL FEATURES

- Ultimate quality prints up to A3+ with commercial scale productivity
- Unique 12-ink system with exceptional colour gamut
- Chroma Optimizer for uniform glossiness and crisp, sharp blacks
- Optimum Image Generating system to enhance colour reproduction
- Stunning black and white prints with 5 monochrome inks
- LUCIA inks for outstanding photo permanence and colour stability
- High capacity individual ink tanks with easy to change cartridges
- Ethernet connectivity allowing easy sharing amongst multiple users
- Photo discs can be personalised with Direct Disk Print



**LUCIA**  
ink



© Jeff Ascoug. Canon Ambassador

## PIXMA PRO-10

### Gallery-quality colour and mono images

Delivering stunning, gallery-quality colour and monochrome A3+ prints for the image-conscious professional looking to create and sell gallery-quality photos. The PIXMA PRO-10's exceptional 10-ink system with professional LUCIA pigment inks, including Chroma Optimizer, delivers images with stable, accurate colours, uniform glossiness and crisp, sharp blacks.

The PIXMA PRO-10's image processing technologies and colour enhancement system (Optimum Image Generating system) ensure outstanding screen-to-print colour matching. The three dedicated monochrome inks create beautiful black and white photos in matte and gloss which gives smooth tonal gradations and reduce graininess.

Advanced workflow management software is included and is compatible with all major photo applications, making the production of professional prints easy and efficient. Impressive media handling includes support for a range of paper types and sizes as well as Canon ICC profiles for many popular papers from well-known manufacturers. Coupled with Wi-Fi / Ethernet connectivity, this makes the PRO-10 a true creative business ally you can rely on.



**LUCIA**  
ink

## PIXMA PRO-100

### Vibrant and exciting

When it comes to producing exhibition quality images at home, the PRO-100 is the perfect choice. The 8-ink dye-based system delivers truly vibrant colour prints with unrivalled glossiness. With three monochrome inks you can create beautiful, classic black and white photographs with smooth tonal gradations.

Print great looking photographs fast with the PIXMA PRO-100, which has a FINE Print head with 3pl droplets, delivering up to 4800dpi print

resolution. It can produce an A3+ photolab quality colour print in approx. 1 min 30 sec or approx. 2 min 55 sec for black and white.

The ChromaLife100+ system inks produce quality prints for years to come. Individually replaceable ink tanks for each of the eight colours minimise waste and reduce printing costs. Produce vibrant colour photos efficiently with accurate screen-to-print colour matching using the PRO-100's advanced applications,

workflow management and colour enhancement technologies.

Supporting a wide range of media from Canon and other well-known paper manufacturers, the PRO-100 has Ethernet and Wi-Fi connectivity enabling multiple users to print from anywhere in your network. A great printer for the serious home-based photographer wanting to produce photos from 10 x 15cm up to A3+.



**ChromaLife 100+**



#### PROFESSIONAL FEATURES



- Professional A3+ photo printer
- 10-ink pigment-based system with Chroma Optimizer
- Gallery quality, saleable colour and mono prints
- Uniform, quality gloss and deep blacks
- Versatile media support and Direct Disc Print

Delivering stunning, gallery-quality colour and monochrome A3+ photo prints

#### PROFESSIONAL FEATURES



- Stunning quality A3+ photo printer
- Rich colours with 8-ink dye-based system
- 3 mono inks for quality grayscale photos
- Fast print: A3+ colour in 1 min 30 sec
- Wide range of media support

# Print, share, create, organise...

...and a whole lot more. PIXMA's powerful and intuitive software has been developed to fit seamlessly into your workflow, enhance your creativity and increase your productivity.

## ICC profiles

Canon provides a large set of ICC profiles for each of the PIXMA PR series printers to use with Canon papers, as well as with a number of compatible high quality photo and Fine Art papers from other manufacturers. These are downloadable from the Canon Software Download Centre. Additionally, select well-known media providers such as Hahnemühle, Ilford and Canson provide an even wider range of profiles for their papers. Please see their websites for more information.

With PRO Mode you can achieve outstanding screen-to-print colour matching without using ICC profiles.

## Print Studio PRO

Canon's new print plug-in provides the perfect workflow link between your image and the finished printed product. This unique software is designed specifically for PIXMA PRO printers and lets you achieve professional quality photo prints with ease. Print Studio PRO integrates seamlessly with software from the Adobe Photoshop® family (CS, Lightroom, Elements) as well as the Canon Digital Photo Professional application which comes with Canon's EOS digital SLR cameras.

Amongst its many features, Print Studio PRO lets you:

Bring all your print settings into one location with an easy to navigate menu

Save your frequent print setting profile for even faster printing

Add custom text (i.e. Copyright) on a selected part of the photo

## Color Management Tool PRO

Minimise colour variance among different printers or media types by using your spectrometer & Canon's Color Management Tool PRO software. It allows you to create custom ICC profiles that are optimised for your printer, paper and unique work environment - helping to deliver the high colour quality and accuracy that you demand. It features an easy-to-follow wizard, which prints measurement charts that can be scanned with a range of X-Rite calibrating devices (Eye-One PRO, Color Munki) so you can create your unique ICC profiles quickly and easily.

When used with PIXMA PRO-1 and PIXMA PRO-10, it also lets you fine-tune the printer to the specific working environment or even synchronise colours between multiple printers.

This intuitive software is available to download for free from the Canon Download Centre.



## Get Creative

Bring memories back to life using the photo organising capabilities of My Image Garden software, which includes face recognition and the ability to combine photographs in creative ways for printing. Create amazing collages, personalised cards and calendars, or even design labels for your photo discs and print them directly onto the printable disc surface with your PIXMA PRO series printer. With the Print Your Days app you can print yours and your friends' photos directly from Facebook.







© Brent Stirton, Canon Ambassador

# Media flexibility at your fingertips

Exceptional choice of print media, up to 356mm (14") wide, and unique ink technologies make the PIXMA PRO range of photo printers your perfect creative partner.



## Extensive media range

Stunning high quality prints can be achieved with Canon's own extensive range of media, which includes all types of papers from Platinum, Gloss and Semi-gloss through to Matte and Lustre. Combined with LUCIA or ChromaLife100+ inks, their professional finish and texture vividly capture the spirit of your photography in flawless prints that will inspire for generations to come.

## Media versatility

To add to your creative options, you can also load PIXMA PRO printers with a wide variety of specialist medias – such as Baryta, Fine Art and numerous other professional medias from leading manufacturers including Canson, Ilford and Hahnemühle.

**Canon papers:** Luster (LU-101), PRO Glossy II (PP-201), PRO Platinum (PT-101), Semi-gloss (SG-201)

## Putting ink to paper

The breath-taking quality of the images created using the PIXMA range of PRO photo printers is a perfect combination of your passion and our technology. Canon have invested years in FINE print head technology systems and refining inks to give you the results that you can enjoy today. With a choice of professional, pigment-based 12-ink and 10-ink system and specialist dye-based 8-ink system, the PIXMA PRO range helps creative and business users alike to achieve outstanding quality prints in the most cost effective and efficient way possible.

## Black and white prints

With dedicated 3 or 5 monochrome inks and 'Print Black and White Photo' driver setting, coupled with features like a Chroma Optimizer to ensure uniform glossiness and enhanced black density, the PIXMA PRO range offers a new level of quality in professional monochrome printing.

## LUCIA Inks

Perfect Black and White

The professional pigment-based inks available in 12-ink and 10-ink configuration, including Chroma Optimizer clear ink, deliver high density, rich colours with excellent gamut and stable quality. LUCIA inks have outstanding image permanence, allowing you to sell your prints with confidence. With the PIXMA PRO range, all inks are always available to print so there is no need to swap between Matt Black and Photo Black ink.



## ChromaLife100+ Inks

Black and White

The dye-based inks are absorbed deeper in the paper preserving the natural finish of the media to offer rich, vibrant colours, unrivalled glossiness and fast print speeds. With 3 monochrome inks, the PRO-100 8-ink system offers richer colours in dark areas and quality monochrome printing with smooth gradation. Each individual colour's ink tank can be easily replaced to reduce wastage.



ILFORD




Hahnemühle  
FINEART


Stunning high quality prints can be achieved with Canon's own extensive range of media with glossy, semi-gloss and lustre finish as well as Fine Art and other specialist media from leading paper manufacturers.



© Jeff Ascough. Canon Ambassador



PIXMA PRO Series Step-up Chart		PIXMA PRO-100	PIXMA PRO-10	PIXMA PRO-1
<b>Print Resolution</b>		Up to 4800 x 2400 dpi	Up to 4800* x 2400 dpi	Up to 4800* x 2400 dpi
<b>Ink system</b>		Inkjet, dye-based 8-ink system  8 Individual Inks	Inkjet, pigment-based 10-ink system with Chroma Optimizer  10 Individual Inks	Inkjet, pigment-based 12-ink system with Chroma Optimizer  12 Individual Inks
<b>Ink Tanks</b>		8 individual ink tanks: CLI-42BK, CLI-42C, CLI-42M, CLI-42Y, CLI-42PC, CLI-42PM, CLI-42GY, CLI-42LGY	10 individual ink tanks: PGI-72PBK, PGI-72MBK, PGI-72GY, PGI-72C, PGI-72M, PGI-72Y, PGI-72PC, PGI-72PM, PGI-72R, PGI-72CO	12 individual ink tanks: PGI-29Y, PGI-29M, PGI-29C, PGI-29R, PGI-29PM, PGI-29PC, PGI-29MBK, PGI-29PBK, PGI-29DGY, PGI-29GY, PGI-29LGY, PGI-29CO
<b>Ink Tank Capacity</b>		8 x 13ml	10 x 14ml	12 x 36ml
<b>Colour A3+ photo speed**</b>		Approx. 1 min. 30 sec.	Approx. 3 min. 35 sec.	Approx. 2 min. 55 sec.
<b>Print Longevity (Approx.)</b>		Album life: 200 years Gas Fastness: 10 years (PT-101, SG-201, LU-101)	Album life: 200 years Gas Fastness: 50 years (PT-101, SG-201, LU-201)	Album life: 200 years Gas Fastness: 50 years (PT-101, SG-201)
<b>Paper Input</b>		Sheet Feeder: Max. 150 sheets Manual Feeder: 1 sheet	Sheet Feeder: Max. 150 sheets Manual Feeder: 1 sheet	Sheet Feeder: Max. 150 sheets Manual Feeder: 1 sheet
<b>Blu-ray/DVD/CD Printing</b>		Available as standard	Available as standard	Available as standard
<b>Paper size</b>		From 10 x 15cm to A3+ 356mm (14") wide	From 10 x 15cm to A3+ 356mm (14") wide	From 10 x 15cm to A3+ 356mm (14") wide
<b>Connectivity</b>		USB, Wi-Fi, Ethernet, PictBridge, AirPrint	USB, Wi-Fi, Ethernet, PictBridge, AirPrint	USB, Ethernet, PictBridge
<b>Dimensions (W x D x H)</b>		689 x 385 x 215mm	689 x 385 x 215mm	695 x 462 x 239mm
<b>Weight</b>		Approx. 19.7kg	Approx. 20.0kg	Approx. 27.7kg

 Step-up features

\* Ink droplets can be placed with a pitch of 1/4800 inch at minimum.

\*\* 11" x 14" image printed with borders onto A3+ SG-201 media using default settings

**Canon**

Canon Inc.  
canon.com

Canon Europe  
canon-europe.com

English Edition 0167W442  
© Canon Europa N.V., 2012

Canon (UK) Ltd  
Woodhatch  
Reigate  
Surrey  
RH2 8BF  
Telephone no: 01737 220000  
facsimile 01737 220022  
canon.co.uk

Canon Ireland  
3006 Lake Drive  
Citywest, Saggart  
Co.Dublin, Ireland  
Telephone No: 01 2052400  
Facsimile No: 01 2052525  
canon.ie

[www.canon-europe.com](http://www.canon-europe.com)